

YUBA COUNTY

Corridors & Community Reinvestment



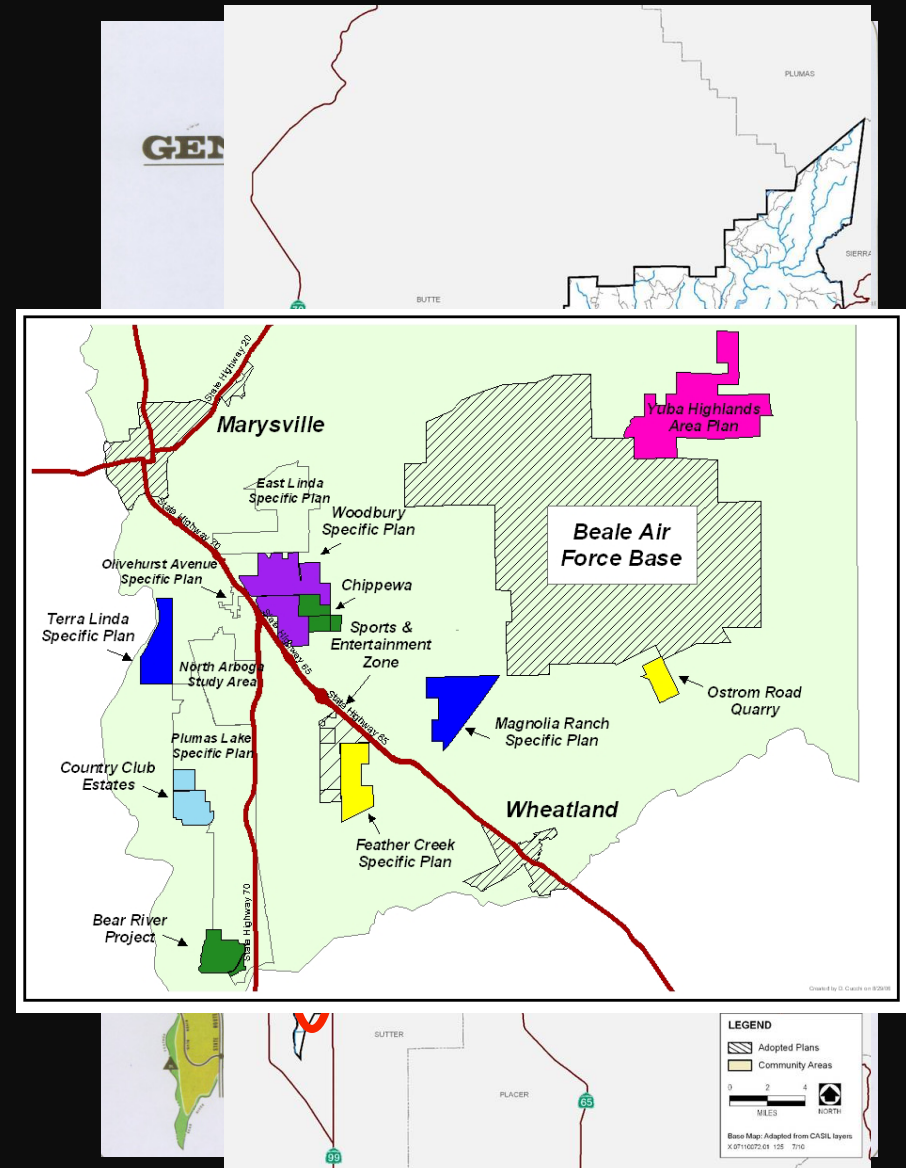
- 30 miles north of Sacramento
- 644 Square Miles
- Elevation ~50 to 4,800 ft
- 73,000 people
- Primary Industries:
Agriculture, Mining, Timber
Production, & Public Sector





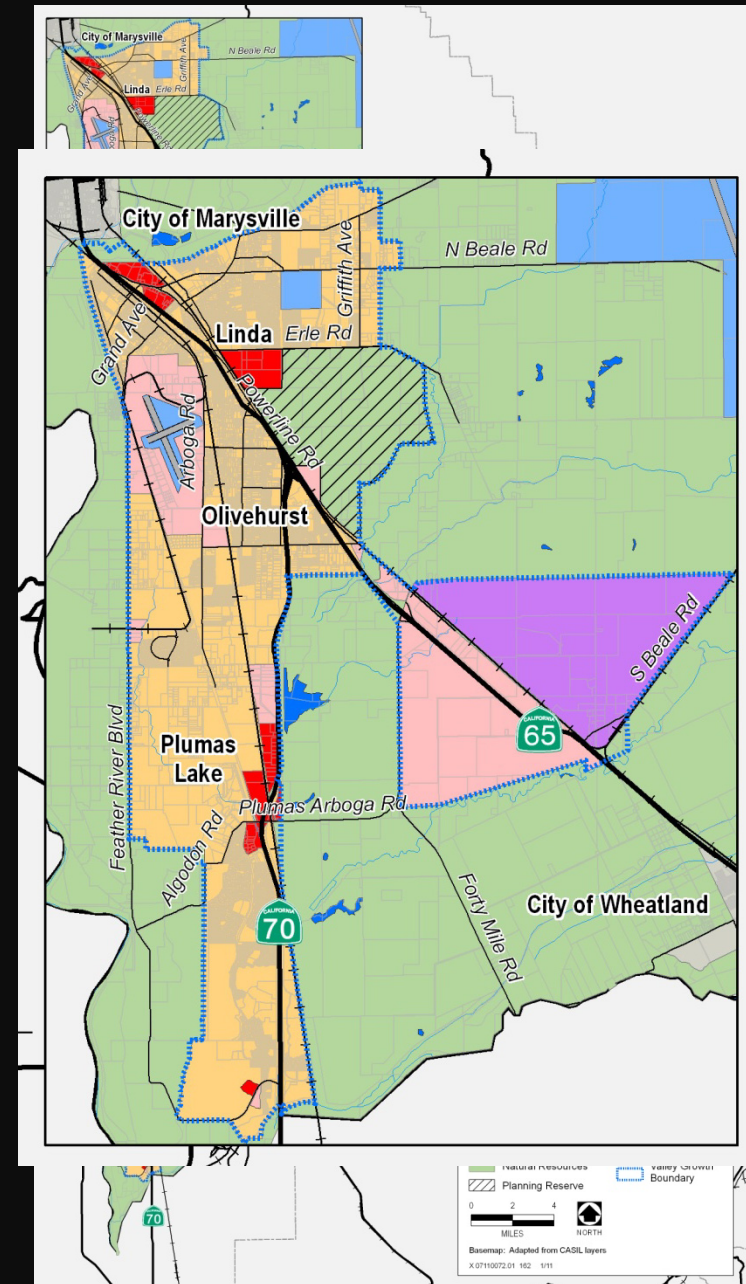
Historic Growth Patterns

- Pre-1990s
 - Less than 6% of County developed
 - Population < 50,000 (1980)
 - 2 cities & 7 small unincorporated communities
- 1990s – Land Grab
 - Population ~58,000
 - 4 specific plans & 1 community plan
 - 33,500 new dwelling units = 90,000 additional people
- 2000s
 - Continuation of sprawl
 - 3,000 new dwelling units
 - Initiation of 2030 General Plan
 - Applications for ~ 17,00 new dwelling units (5 new plan areas)
 - Previous plan areas 0-25% built



2030 General Plan

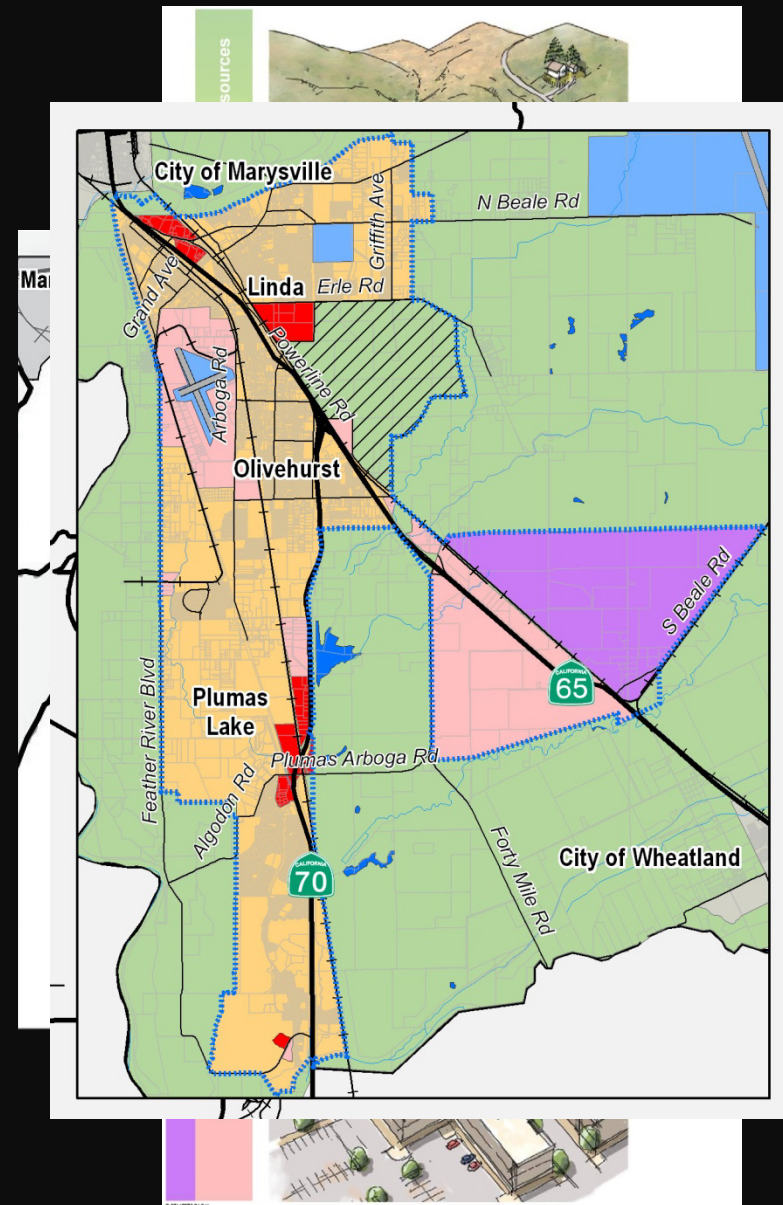
- Started February 2007 & adopted June 2011
- Analyzed locations for reductions in growth
- Established growth boundaries
 - Rural Communities
 - Valley Growth Boundary



2030 General Plan

➤ Key Policies for Sustainable Growth

- 4/5 vote to change VGB
- Transect Concepts
- Infrastructure Phasing
- Planning Reserve
- Jobs/Housing Balance
- Identified Key Corridors
- Focus resources on existing infill and developing communities
- Grass Roots community planning efforts



Corridor & Community Reinvestment Plans

East Linda Revitalization Plan

➤ Existing Conditions

- Missing curb, gutter, & sidewalks
- Dangerous Roadway
- Vacant & underutilized properties
- Zoning & Development Standards that promote low density residential and low value commercial strip centers

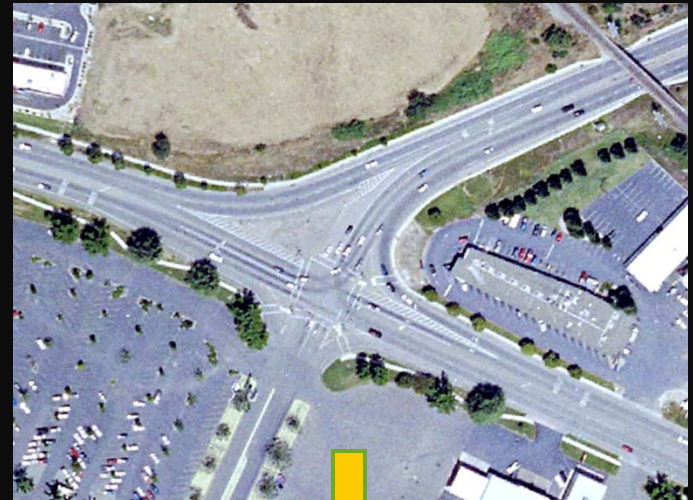


Corridor & Community Reinvestment Plans

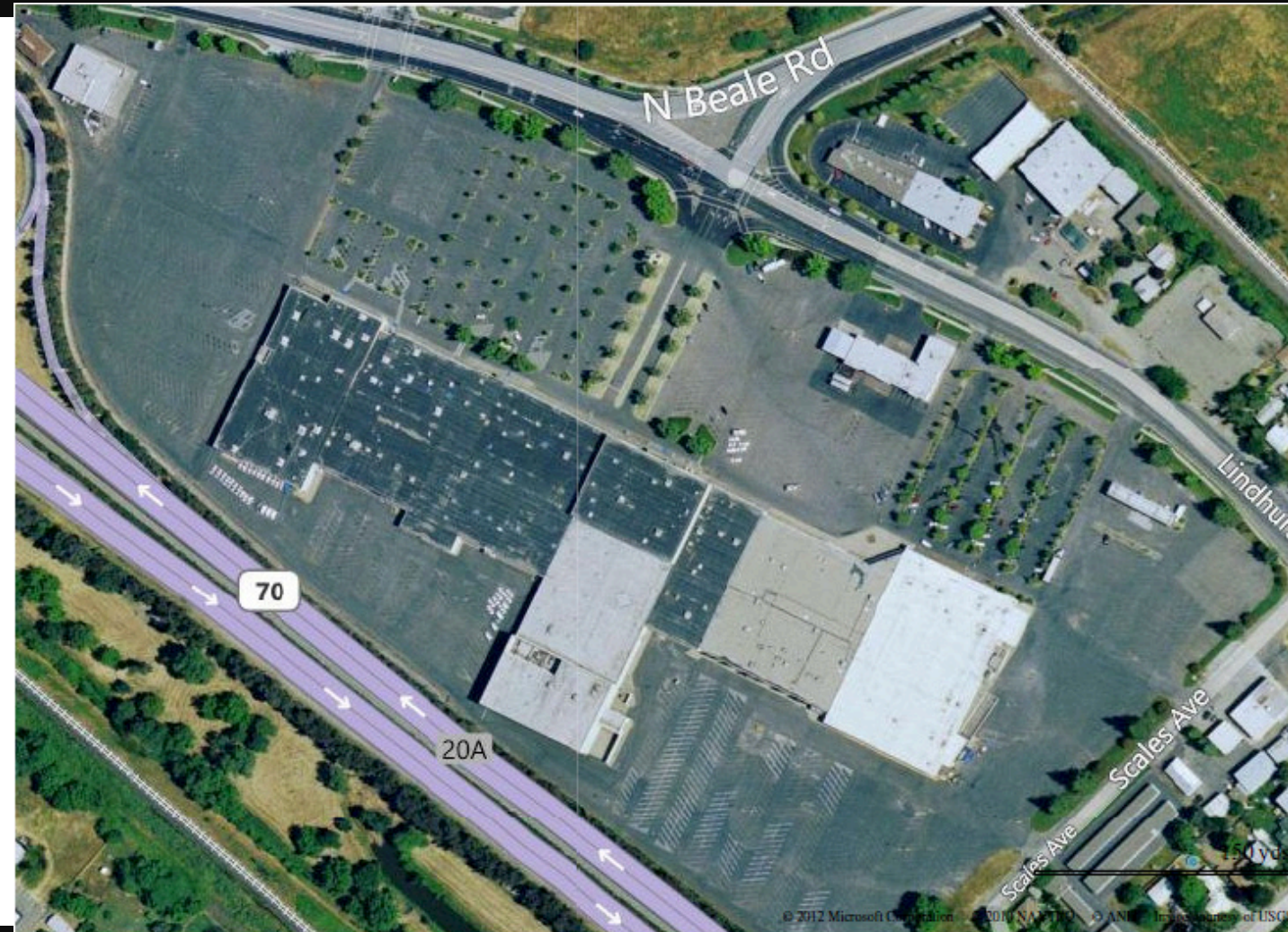
East Linda Revitalization Plan

➤ Opportunities

- Infrastructure improvements
- Zoning & Development Standards
 - Increase allowed density
 - Mixed-use standards
 - Parks & other public spaces
- Opportunities sites



Corridor & Community Reinvestment Plans East Linda Revitalization Plan



Corridor & Community Reinvestment Plans

Olivehurst Sustainable Community Plan

➤ Existing Conditions

- Missing curb, gutter, & sidewalks
- Vacant & underutilized properties
- Deteriorated “downtown” area
- Zoning & Development Standards
 - Promote low density residential
 - Promote general commercial



Corridor & Community Reinvestment Plans

Olivehurst Sustainable Community Plan

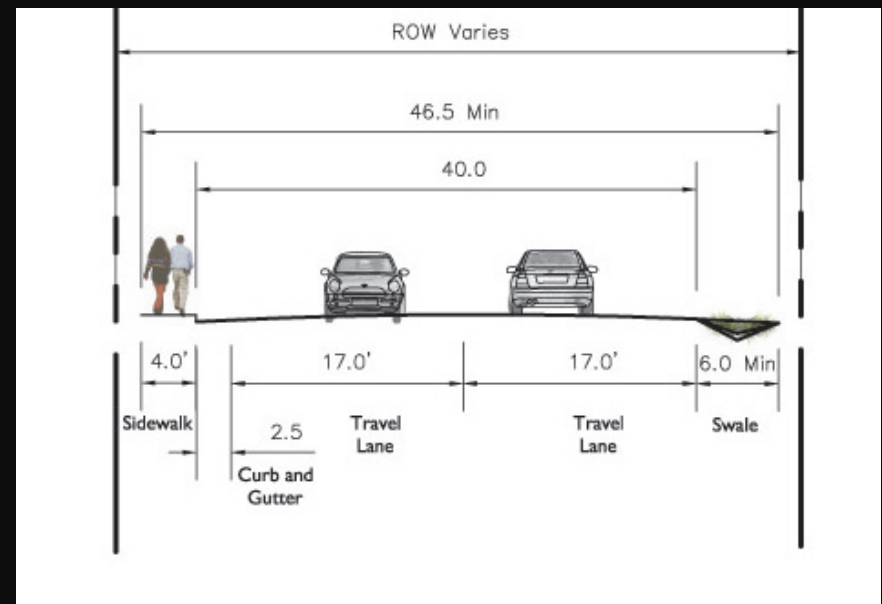
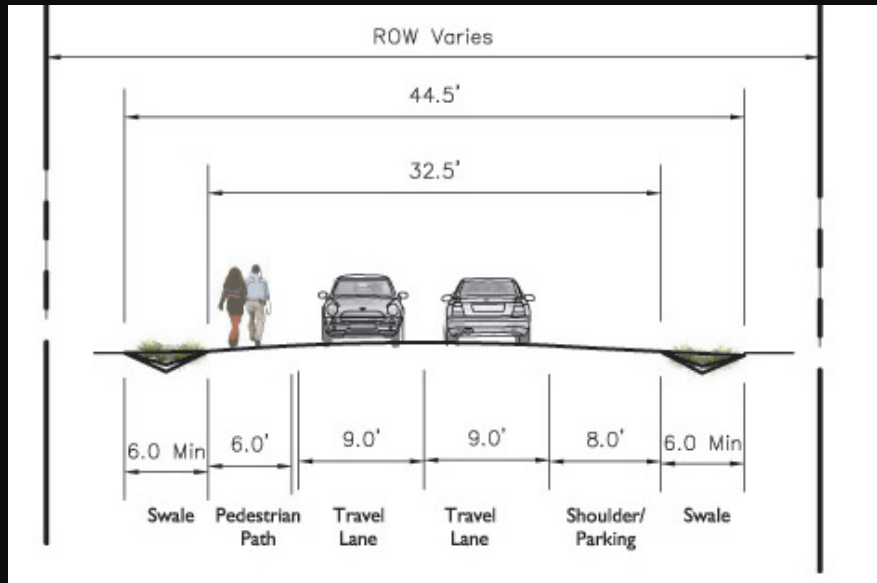
➤ Opportunities

- Infrastructure improvements
- Zoning & Development Standards
 - “Downtown” core
 - Commercial mixed-use
 - Neighborhood nodes
 - Cottage style residential
 - Public spaces
- Opportunities sites



Corridor & Community Reinvestment Plans

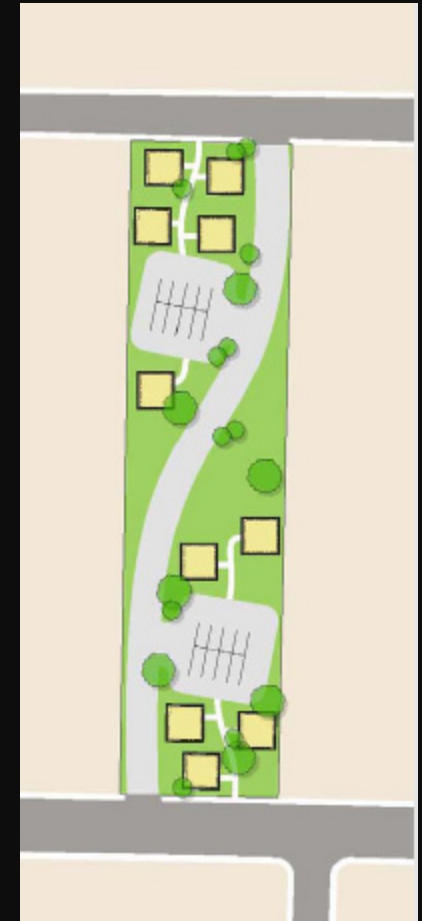
Olivehurst Sustainable Community Plan



Corridor & Community Reinvestment Plans Olivehurst Sustainable Community Plan



Corridor & Community Reinvestment Plans Olivehurst Sustainable Community Plan



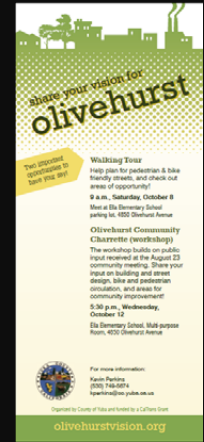
Lessons Learned

➤ Community Engagement

- Have multiple types of meeting/workshop formats
- Partner with local non-elected leaders that will help be your “champions”
 - Key Communicators
- Engage naysayers

➤ Transparency, Documentation, & Outreach

- Public Meetings
- Local Newspaper
- Websites
- Email blasts
- Social media
- Access to Project files



YUBA COUNTY

Corridors & Community Reinvestment



THANK YOU

Wendy W. Hartman, AICP

Yuba County

whartman@co.yuba.ca.us

www.co.yuba.ca.us